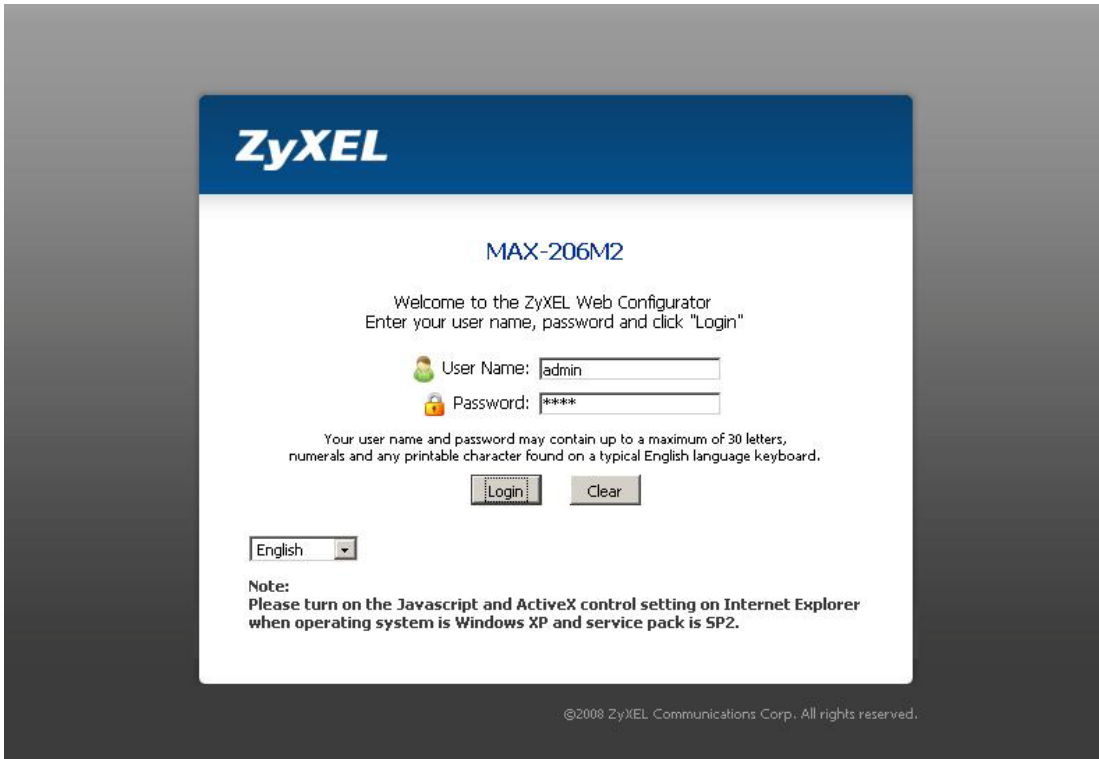


ZyXEL MAX-206M2 WiMAX CPE upgrade procedure

1. Step 1



The screenshot shows the ZyXEL MAX-206M2 Web Configurator login page. At the top is the ZyXEL logo. Below it, the model number "MAX-206M2" is displayed. The main heading is "Welcome to the ZyXEL Web Configurator" followed by the instruction "Enter your user name, password and click 'Login'". There are two input fields: "User Name:" with the value "admin" and "Password:" with the value "****". Below the password field is a note: "Your user name and password may contain up to a maximum of 30 letters, numerals and any printable character found on a typical English language keyboard." There are two buttons: "Login" and "Clear". At the bottom left, there is a language dropdown menu set to "English". A "Note:" section at the bottom states: "Please turn on the Javascript and ActiveX control setting on Internet Explorer when operating system is Windows XP and service pack is SP2." The footer contains the copyright notice: "©2008 ZyXEL Communications Corp. All rights reserved."

Open a web browser, type the CPE address (default: <http://192.168.1.1>). Enter the username and password (default username: admin – default password: 1234) and press “Login”.

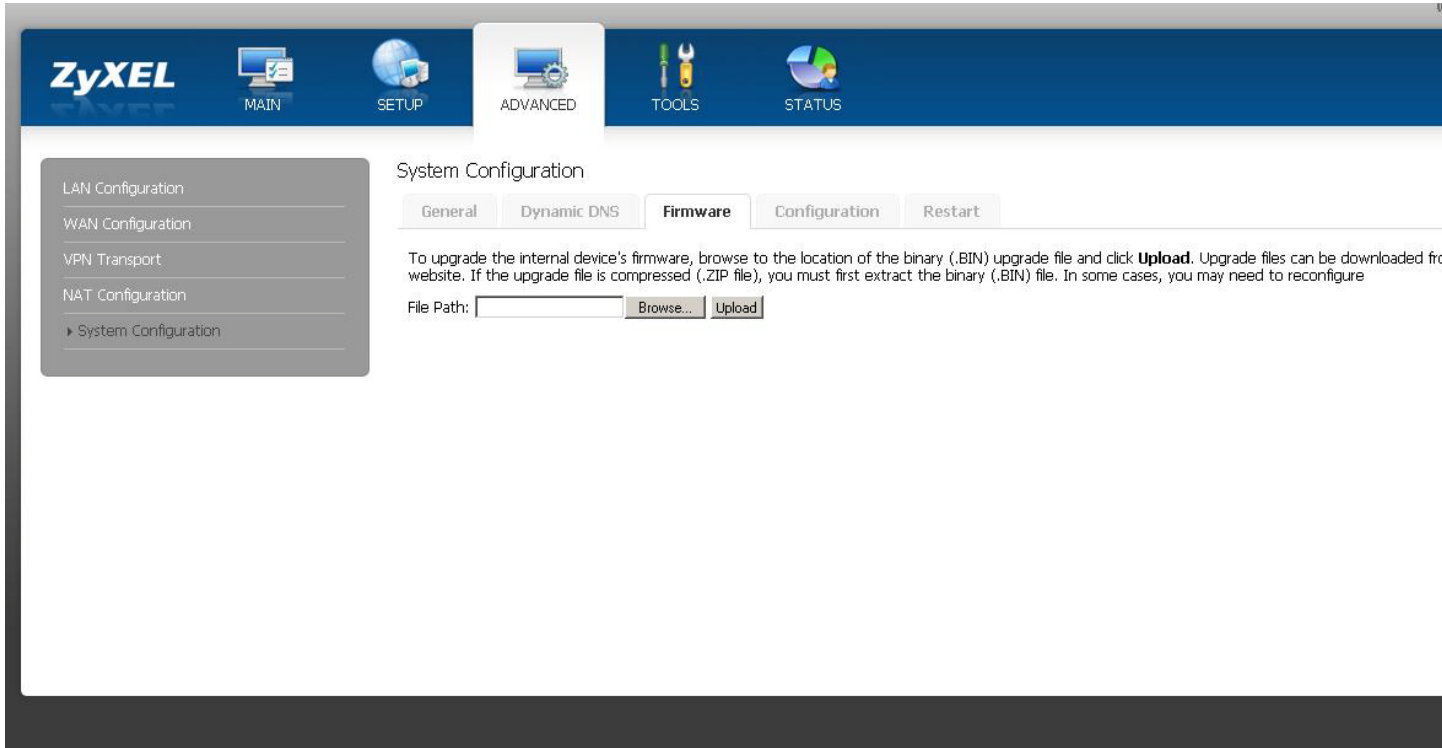
2. Step 2



The screenshot shows the ZyXEL MAX-206M2 Web Configurator "Select a Mode" page. At the top is the ZyXEL logo. Below it, the model number "MAX-206M2" is displayed. The main heading is "Select a Mode". The text reads: "Use the ZyXEL Setup Wizard to quickly and easily configure your Internet connection. If this is your first time using the web configurator, we suggest that you use this mode. Use the Advanced mode if you want to configure all possible settings for your device." There are two links: "Go to Wizard setup" and "Go to Advanced setup". The footer contains the copyright notice: "©2008 ZyXEL Communications Corp. All rights reserved."

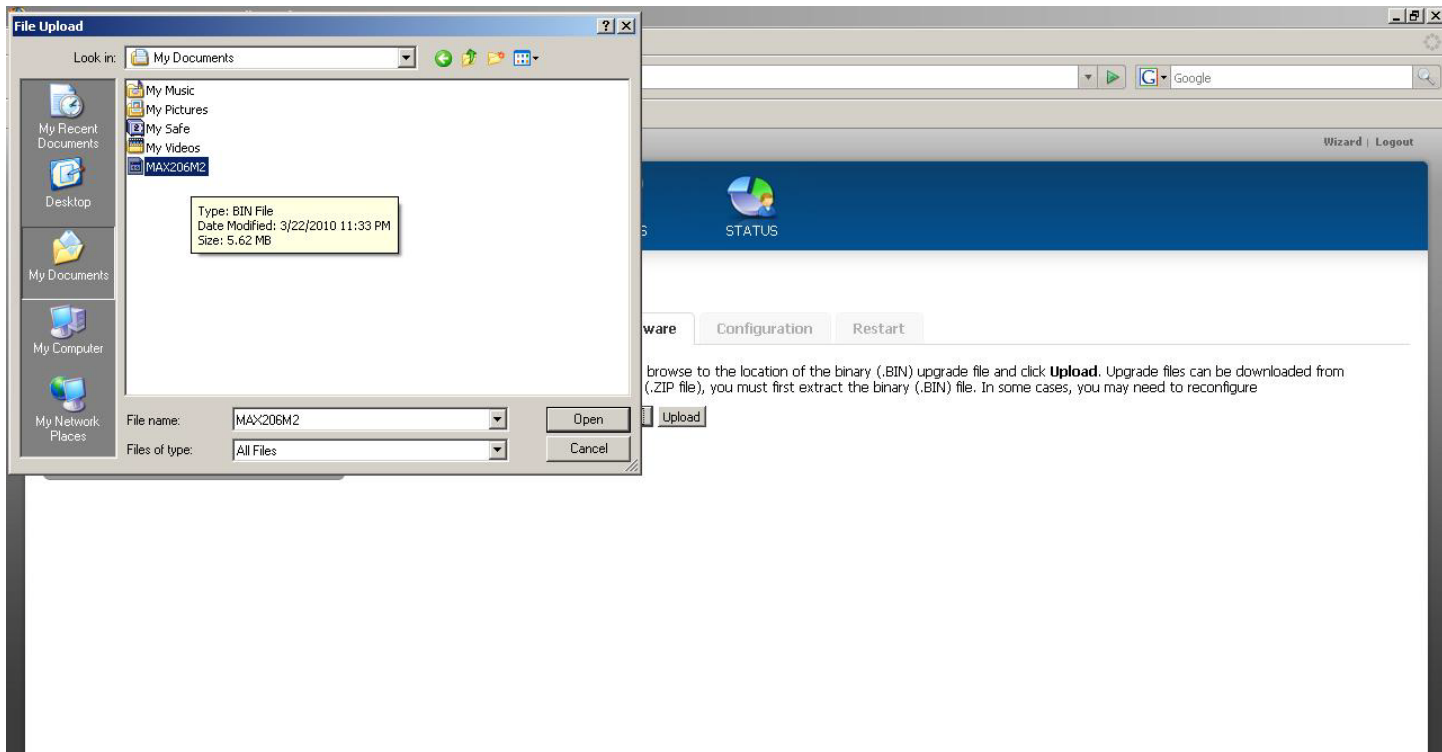
Select “Go to Advanced setup”

3. Step 3



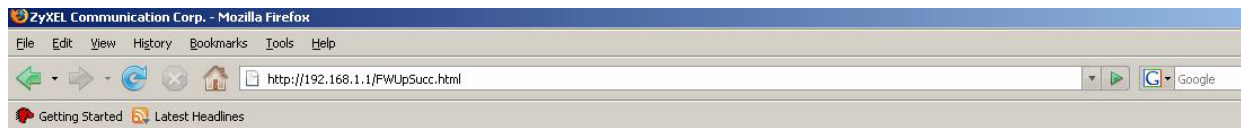
Go to **Advanced** -> **System Configuration** -> **Firmware**

4. Step 4



Press "Browse...". In the "File Upload" dialog box, browse to the firmware file location and select it (MAX206M2.bin). Press "Open".

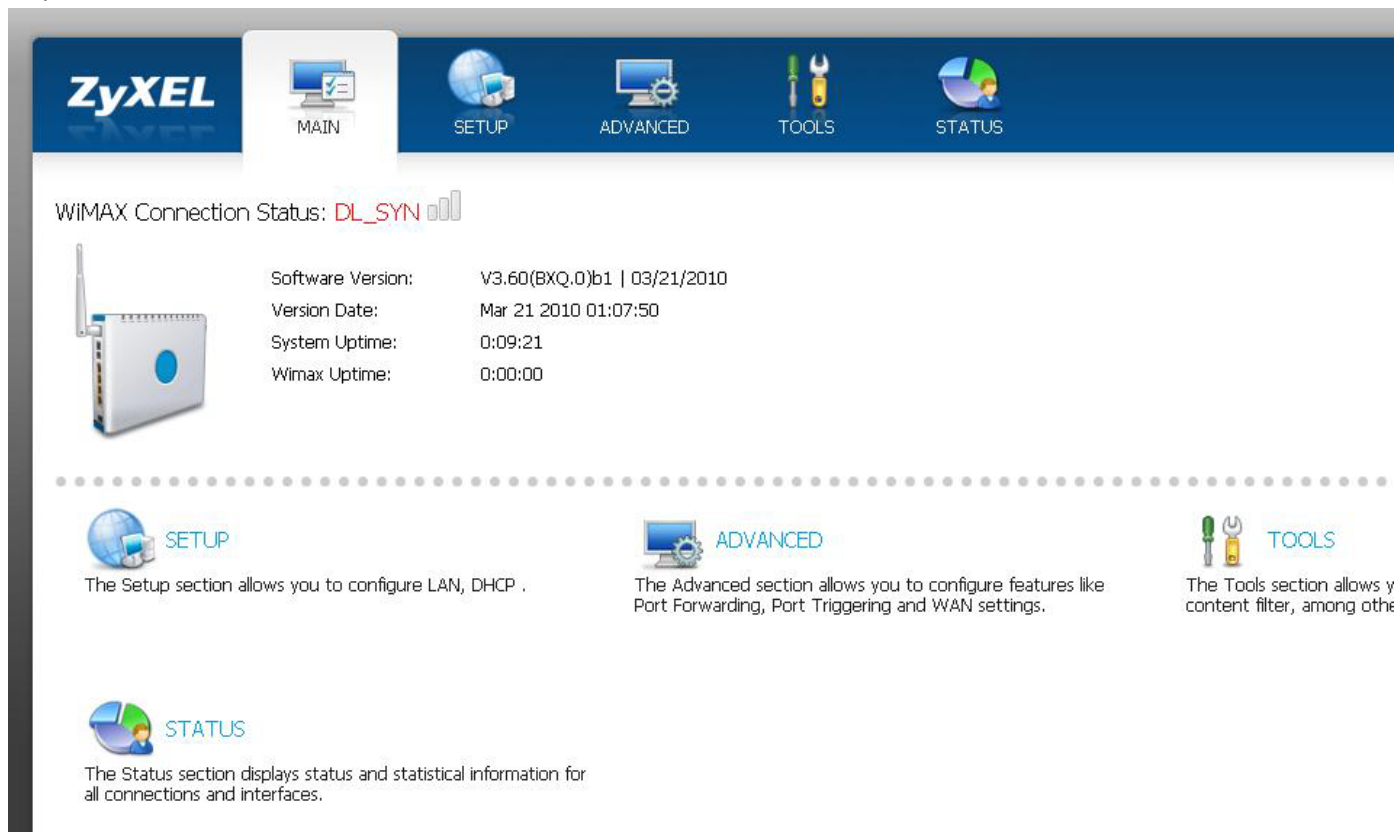
5. Step 5




Firmware Upload In Process
 Firmware Upload In Process Please wait for the device to finish restarting. After the device finishes rebooting, the login screen displays. To access the device after a successful firmware upload, you need to login again. Check you new firmware version in the system status screen.

Press “Upload” to start the upgrade process. The firmware update takes between ten to twenty minutes. As long as the message “Firmware Upload In Process” is displayed **do not turn off the CPE**.

6. Step 6



After finishing, the CPE will reboot and display the login screen. Login as in step 1. The welcome page should display the new version firmware version: “V3.60(BXQ.0)b1”.

The CPE will reconnect automatically using the last settings.

Congratulations! You have successfully upgraded your ZyXEL MAX-206M2 WiMAX CPE to the latest release.